

# COMPEX CERTIFICATION PROCESS

## Qualified Practitioner:

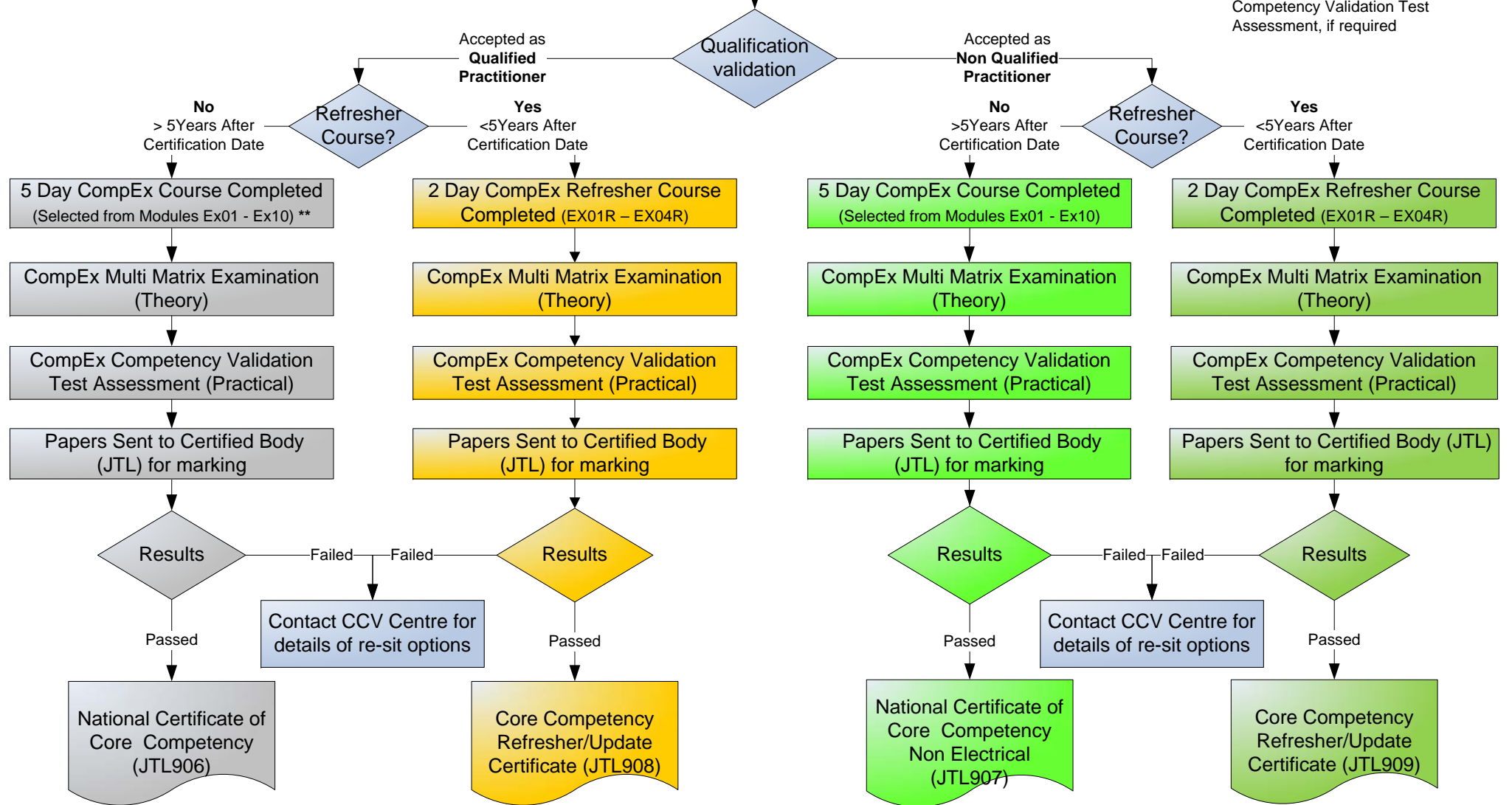
Electrotechnical craftsperson as defined within the British Electricity at Work Regulations 1989

## Non Qualified Practitioner:

non electrical craftsperson with relevant experience and interest or Non Practising Qualified Practitioner. Non practising declaration made on JTL904

Contact CompEx Competency Validation (CCV) Centre of your choice via [www.compex.org.uk](http://www.compex.org.uk) or JTL 01689 884100

Complete the Candidate Registration Form JTL904/R and sent to CCV Centre, including copies of qualifications and photo ID



**> 5 Years After Certification Date:**  
If > 5 years since the date of the original Certificate then it is recommended to complete the 5 day course. An appeal may be made in writing to the Certification Body

**\*\* Optional**  
Direct Route to Examination and Competency Validation Test Assessment, if required